

## M3800 1/2" Master Kit

- (3) Air Outlets,
- 30 m. 1/2" Tubing,
- (1) Manifold Kit,
- (1) Tee, Tools



### 1/2" Outlet Kit

M3810

(AIR CHUCK SOLD SEPARATELY)



**Tee**  
M8010



**Male NPT Fitting**  
M8001 3/8" NPT  
M8002 1/2" NPT



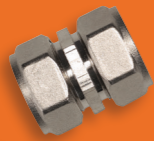
**Elbow**  
M8080



**Pipeclip**  
(10/pkg)  
M8064



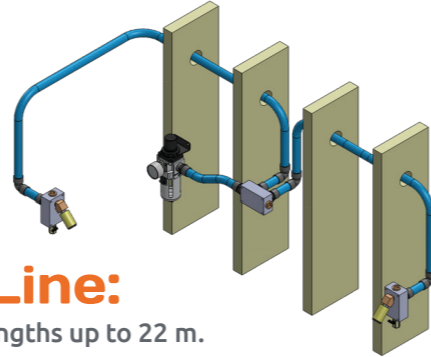
**1/2" Tubing Kit**  
M6026 30 m.  
M6027 90 m.



**Union**  
M8021

# MAXLINE<sup>®</sup>

BY RAPIDAIR



## USE 1/2" MaxLine:

- Tubing lengths up to 22 m. from the compressor
- Building size up to 185 sq. m.
- 1 to 2 air users
- In wall or surface mounted tubing
- 450 Lm max flow Rate (up to 3 hp compressor)



## USE 3/4" MaxLine:

- Tubing lengths up to 45 m. from the compressor
- Building size up to 371 sq. m.
- Multiple air users
- Surface mounted tubing
- 1100 Lm max flow rate (up to 6 hp compressor)

# MAXLINE<sup>®</sup>

BY RAPIDAIR

## Tools & Installation

1

CUT the tubing square with the cutter, ROTATING wrist while cutting



2

BEVEL the inside of the tubing by inserting the reaming tool and rotating it at least 3 full turns. Remove nut and split ring from fitting and place on tubing



3

PUSH the fitting onto the tubing and fully against the shoulder of the fitting (soapy water will help this process)



4

TURN the nut hand tight. Put a reference mark on the nut and fitting body



5

TIGHTEN nut with wrench a minimum of 3/4 of a turn or until tight



# MAXLINE<sup>®</sup>

BY RAPIDAIR



**Rapidair Systems**  
Burpengary East, QLD, Australia  
0450 566 440  
[www.rapidairsystems.com.au](http://www.rapidairsystems.com.au)

### WARNINGS

- Compressed air is dangerous if not used properly.
- Do not point compressed air source at any part of your body or at any person.
- Always use eye protection when using compressed air.
- Turn off compressor when not in use

**Retail**  
1/2" & 3/4"

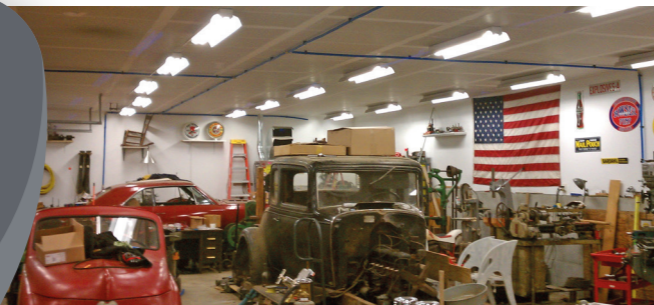


# MAXLINE<sup>®</sup>

BY RAPIDAIR

0450 566 440

[www.rapidairsystems.com.au](http://www.rapidairsystems.com.au)  
See 3/4" on other side





**is an industrial compressed air piping system that is:**

- fast and easy to install
- cost effective
- leak proof
- corrosion resistant

MaxLine's multilayer construction can be easily bent by hand and maintain its desired shape, giving a professional appearance with no tubing sag. Rolls allow for faster installation times, with fewer joints. Its smooth interior walls will never build up scale or rust making it an efficient air system.

MaxLine piping can be mounted on wall surface, in wall for new construction and be directly buried under ground or concrete. This system is easily configured and can be modified.

MaxLine fittings are nickel plated brass designed for years of long term performance. Its double o-ring compression design is engineered to be a leak proof system, that can be easily disassembled and reused.

Sizes: 1/2", 3/4", 1",  
Rolls up to 90 m.



- Operating Pressure  
200 psi at 22°C  
160 psi at 60°C
- Meets OSHA guidelines
- Complies with  
ASTMF1282
- Temperature Range -40°C to 60°C
- Compatible with common compressor oils



- Nickel plated brass
- Double o-ring design
- Split ring allows disassembly
- No expensive tools required

**MaxLine will hold any bent shape**

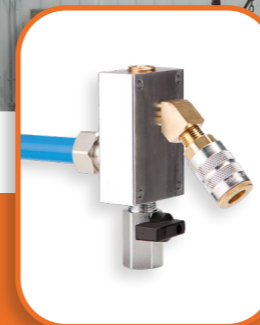
**Bend Radius:**  
1/2" MaxLine: 10-15 cm  
3/4" MaxLine: 15-20 cm



Surface Mount



Exterior Mount



Hidden Tubing



**M7500 3/4" Master Kit**



(3) Air Outlets,  
30 m. 3/4" Tubing,  
Tools, (2) Tees,  
(1) 3/4" MNPT  
Straight,  
(20) Clips



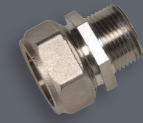
**3/4" Outlet Kit**  
M7510  
(AIR CHUCK SOLD SEPARATELY)



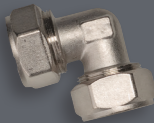
**3/4" x 1/2" x 3/4" Reducing Tee**  
M8014



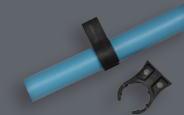
**Tee**  
M8011



**Male NPT Fitting**  
M8003 3/4" NPT  
M8005 1/2" NPT



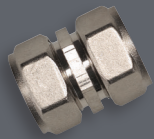
**Elbow**  
M8067



**Pipeclip (10/pkg)**  
M8065



**3/4" Tubing Kit**  
M6030 30 m.  
M6031 90 m.



**Union**  
M8022



**0450 566 440**  
[www.rapidairsystems.com.au](http://www.rapidairsystems.com.au)  
See 1/2" on other side

